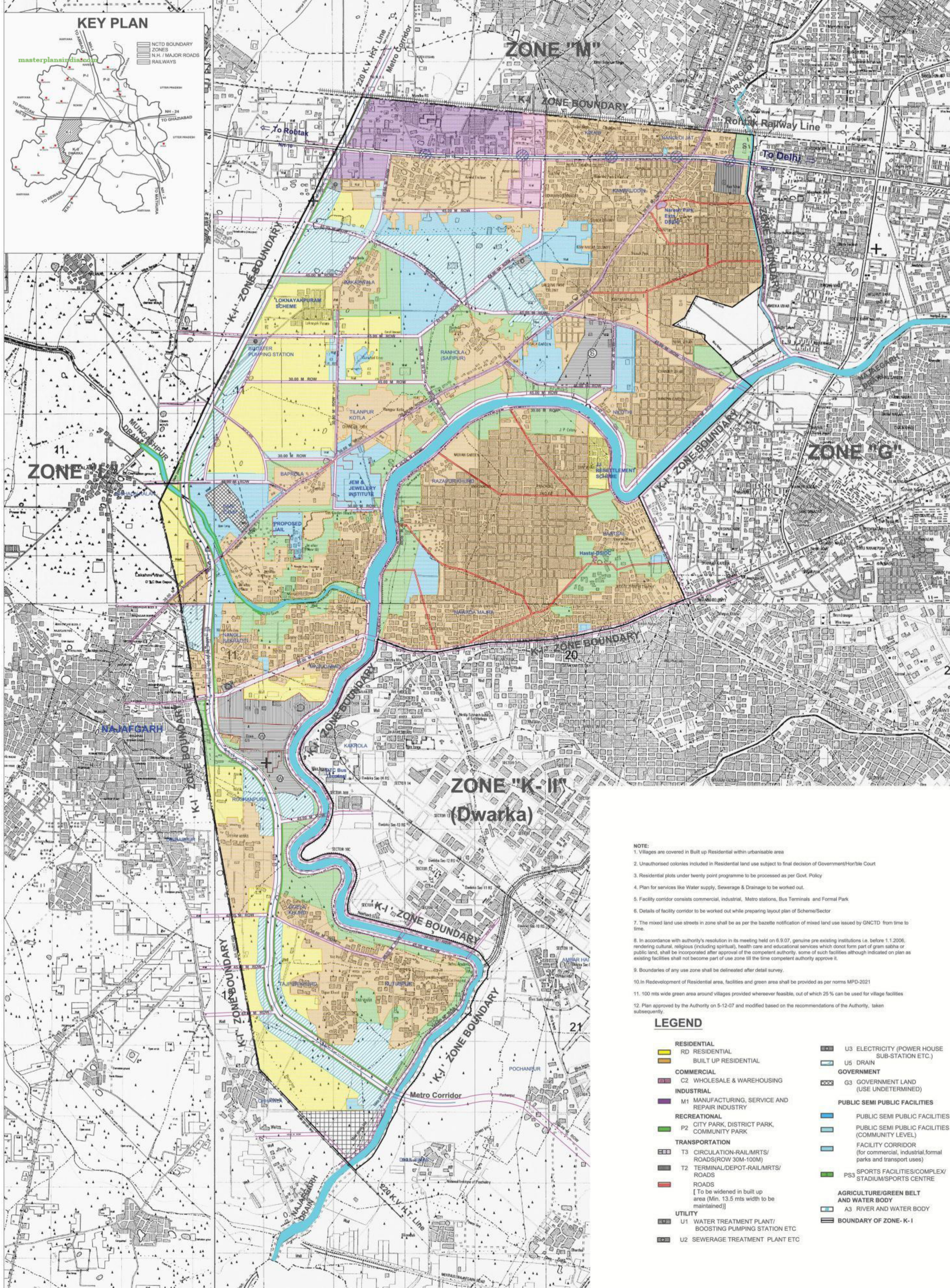
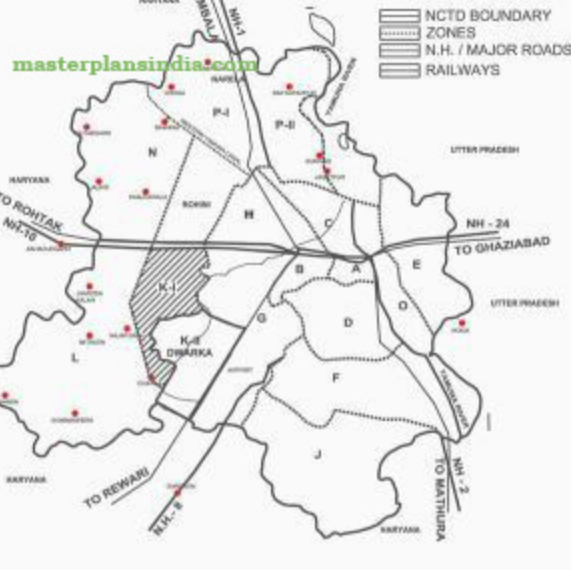


KEY PLAN



- NOTE:**
- Villages are covered in Built up Residential within urbanisable area
 - Unauthorised colonies included in Residential land use subject to final decision of Government/Hon'ble Court
 - Residential plots under twenty point programme to be processed as per Govt. Policy
 - Plan for services like Water supply, Sewerage & Drainage to be worked out.
 - Facility corridor consists commercial, industrial, Metro stations, Bus Terminals and Formal Park
 - Details of facility corridor to be worked out while preparing layout plan of Scheme/Sector
 - The mixed land use streets in zone shall be as per the bazzette notification of mixed land use issued by GNCTD from time to time.
 - In accordance with authority's resolution in its meeting held on 6.9.07, genuine pre existing institutions i.e. before 1.1.2006, rendering cultural, religious (including spiritual), health care and educational services which do not form part of gram sabha or public land, shall be incorporated after approval of the competent authority, some of such facilities although indicated on plan as existing facilities shall not become part of use zone till the time competent authority approve it.
 - Boundaries of any use zone shall be delineated after detail survey.
 - In Redevelopment of Residential area, facilities and green area shall be provided as per norms MPD-2021
 - 100 mts wide green area around villages provided wherever feasible, out of which 25 % can be used for village facilities
 - Plan approved by the Authority on 5-12-07 and modified based on the recommendations of the Authority, taken subsequently

LEGEND

RD RESIDENTIAL	U3 ELECTRICITY (POWER HOUSE SUB-STATION ETC.)
BUILT UP RESIDENTIAL	U5 DRAIN
COMMERCIAL	GOVERNMENT
C2 WHOLESALE & WAREHOUSING	G3 GOVERNMENT LAND (USE UNDETERMINED)
INDUSTRIAL	PUBLIC SEMI PUBLIC FACILITIES
M1 MANUFACTURING, SERVICE AND REPAIR INDUSTRY	PUBLIC SEMI PUBLIC FACILITIES (PUBLIC SEMI PUBLIC FACILITIES (COMMUNITY LEVEL))
RECREATIONAL	FACILITY CORRIDOR (for commercial, industrial, formal parks and transport uses)
P2 CITY PARK, DISTRICT PARK, COMMUNITY PARK	PS3 SPORTS FACILITIES/COMPLEX/ STADIUM/SPORTS CENTRE
TRANSPORTATION	AGRICULTURE/GREEN BELT AND WATER BODY
T3 CIRCULATION-RAIL/MRTS/ROADS(ROW 30M-100M)	A3 RIVER AND WATER BODY
T2 TERMINAL/DEPOT-RAIL/MRTS/ROADS	BOUNDARY OF ZONE- K-I
ROADS (To be widened in built up area (Min. 13.5 mts width to be maintained))	
UTILITY	
U1 WATER TREATMENT PLANT/ BOOSTING PUMPING STATION ETC	
U2 SEWERAGE TREATMENT PLANT ETC	