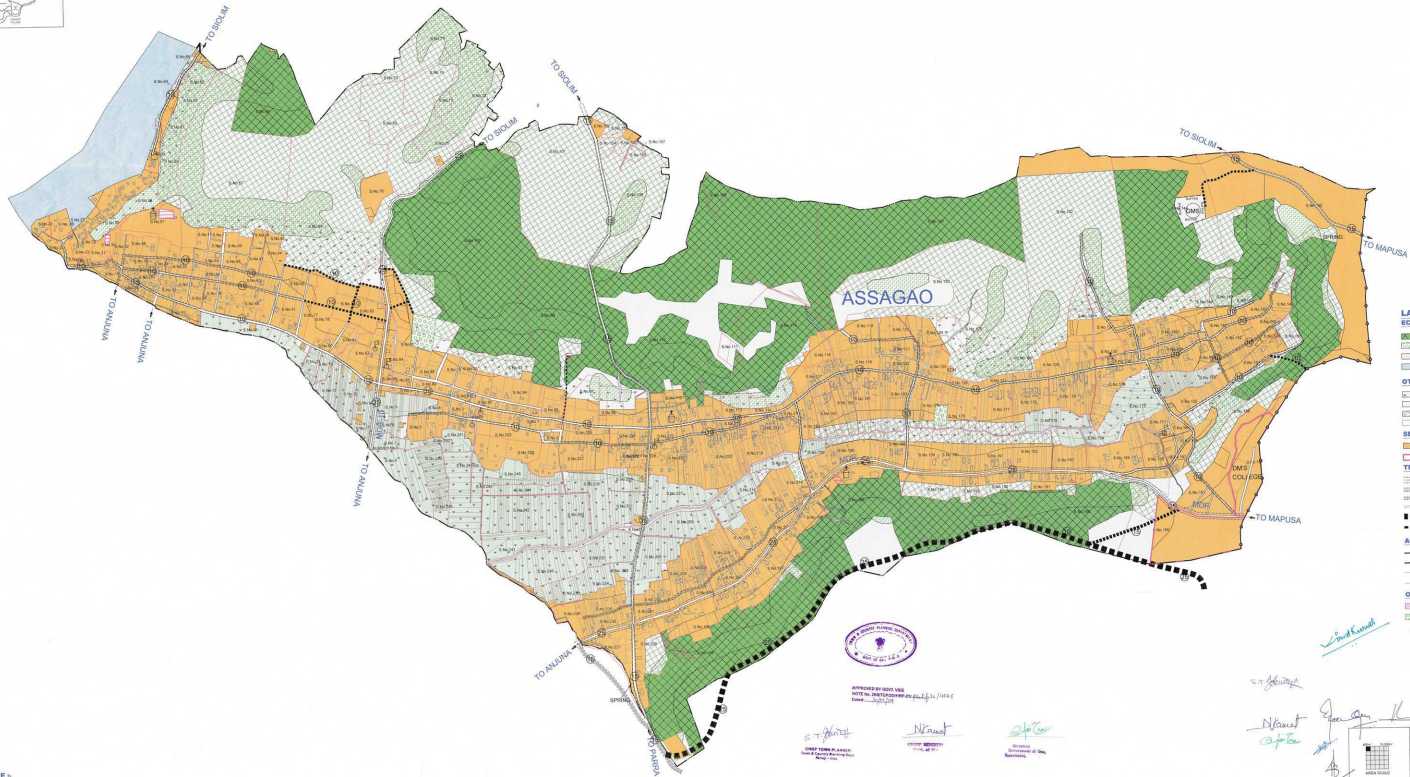


ASSAGAO PANCHAYAT BARDEZ TALUKA SCALE 1: 5000



- LAND USES**
- ECOLOGICALLY SENSITIVE AREAS (ECO-1)**
- NO DEVELOPMENT SCOPES
 - PODDY FIELDS
 - SHRUB SALVAGE FOREST
- OTHER ECOLOGICALLY SENSITIVE AREAS (ECO-2)**
- CULTIVABLE LAND
 - ARABIAN SEA
 - MARSHAL COVERS
 - WINGRICH COMMON AREAS
- SETTLEMENTS**
- SETTLEMENT AREA
 - INSTITUTIONAL ZONE
- TRANSPORTATION**
- MAJOR DISTRICT ROADS (DRH)
 - MAIN PANCHAYAT ROADS (DRH)
 - OTHER PANCHAYAT ROADS (DRH)
 - OTHER ROADS (MURBAN 94)
 - PROTECTED ROADS (DRH)
 - PROTECTED ROADS (DRH)
- ADMINISTRATIVE BOUNDARIES**
- MUNICIPAL BOUNDARY
 - PANCHAYAT BOUNDARY
 - SURVEY BOUNDARY
 - SUB DIVISION BOUNDARY
- OTHERS**
- CREWSTORIAN / GIMETTER
 - PLAY GROUND
 - GARBAGE MANAGEMENT SITE
 - SCH
 - V.P
 - TEMPLE
 - CHARDS / CHAPEL



APPROVED BY DATE
NOTE NO. 001/2011-2012
Date: 10/11/2011

(Signatures and stamps of officials)

NOTE

- This master plan is prepared in accordance with the provisions of the Regional Plan for Goa (2001) and the Bardez Taluka which has been approved by the T.C.P. Board on 10th May 2011.
- The land use zones shown on this map are subject to the final confirmation and sanction by the competent authority.
- The land use zones shown on this map are subject to the final confirmation and sanction by the competent authority.
- The land use zones shown on this map are subject to the final confirmation and sanction by the competent authority.
- The land use zones shown on this map are subject to the final confirmation and sanction by the competent authority.
- The land use zones shown on this map are subject to the final confirmation and sanction by the competent authority.
- The land use zones shown on this map are subject to the final confirmation and sanction by the competent authority.
- The land use zones shown on this map are subject to the final confirmation and sanction by the competent authority.
- The land use zones shown on this map are subject to the final confirmation and sanction by the competent authority.
- The land use zones shown on this map are subject to the final confirmation and sanction by the competent authority.

Original of Approved S.A. (Scale) Plans upto 500 m will be allowed upto the full specification of the UP State of Industrial Category.

ASSAGAO PANCHAYAT
BARDEZ TALUKA

REGIONAL PLAN FOR GOA (2001) PART - CIVIL
SEPTEMBER 2011
ENCL. 17/2011

REGIONAL PLAN DIVISION
TOWN AND COUNTRY PLANNING DEPT
GOVT. OF GOA

POPULATION: 2001 - 4000
2011 - 5000

SCALE: 1:5000

MAP FOR PROPOSED DEVELOPMENT OF BARDEZ TALUKA

10 2000