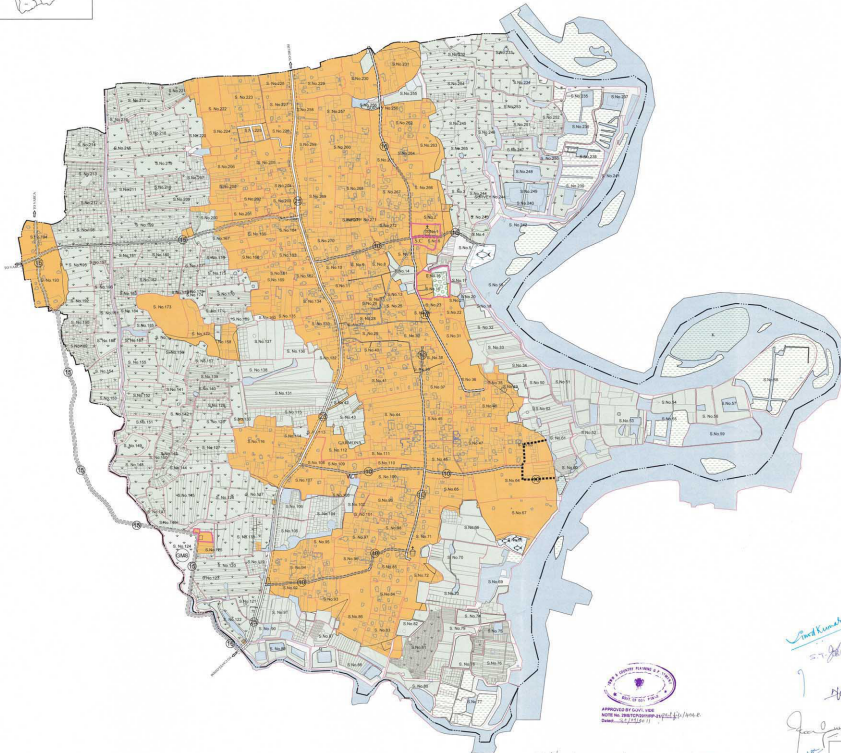




**CARMONA PANCHAYAT
SALCETE TALUKA
SCALE 1: 5000**



- LAND USES**
- ECOLOGICALLY SENSITIVE AREAS (ECS-I)**
- [Pattern: Diagonal lines] MANGROVE FOREST
 - [Pattern: Horizontal lines] NO DEVELOPMENT ZONES
 - [Pattern: Vertical lines] RIVERS/LAKHSAL POND
 - [Pattern: Dotted] PADDY FIELDS, KHAZANS
- OTHER ECOLOGICALLY SENSITIVE AREAS (ECS-II)**
- [Pattern: Dotted] CULTIVABLE LAND
 - [Pattern: Horizontal lines] ORCHARD
 - [Pattern: Vertical lines] FISH FARMS
 - [Pattern: Dotted] IRRIGATION COMMAND AREAS
- SETTLEMENTS**
- [Pattern: Diagonal lines] SETTLEMENT AREA
 - [Pattern: Dotted] INSTITUTIONAL ZONE
- TRANSPORTATION**
- (SOLID LINE)
- [Pattern: Dotted] STATE HIGHWAY (20m)
 - [Pattern: Dotted] MAJOR DISTRICT ROADS (20m)
 - [Pattern: Dotted] MAIN PANCHAYAT ROADS (10m)
 - [Pattern: Dotted] OTHER PANCHAYAT ROADS (10m)
 - [Pattern: Dotted] PROPOSED ROADS (10m)
 - [Pattern: Dotted] OTHER ROADS
- ADMINISTRATIVE BOUNDARIES**
- [Pattern: Dotted] FISCAL/STAT BOUNDARY
 - [Pattern: Dotted] SURVEY BOUNDARY
 - [Pattern: Dotted] SUB DIVISION
- OTHERS**
- [Pattern: Dotted] CREMATORIUM
 - [Pattern: Dotted] PLAY GROUND
 - [Pattern: Dotted] SAND DUNE/SANDY AREAS
 - [Pattern: Dotted] GARBAGE MANAGEMENT SITE
 - [Pattern: Dotted] CHURCH/CHAPEL
 - [Pattern: Dotted] TOURIST BEACH HEAD

NOTES:

- The land use plan is prepared in accordance with the provisions of the Town and Country Planning Act, 1963 and the Kerala Town and Country Planning Regulations, 1964.
- The land use plan is prepared in accordance with the provisions of the Town and Country Planning Act, 1963 and the Kerala Town and Country Planning Regulations, 1964.
- The land use plan is prepared in accordance with the provisions of the Town and Country Planning Act, 1963 and the Kerala Town and Country Planning Regulations, 1964.
- The land use plan is prepared in accordance with the provisions of the Town and Country Planning Act, 1963 and the Kerala Town and Country Planning Regulations, 1964.
- The land use plan is prepared in accordance with the provisions of the Town and Country Planning Act, 1963 and the Kerala Town and Country Planning Regulations, 1964.
- The land use plan is prepared in accordance with the provisions of the Town and Country Planning Act, 1963 and the Kerala Town and Country Planning Regulations, 1964.
- The land use plan is prepared in accordance with the provisions of the Town and Country Planning Act, 1963 and the Kerala Town and Country Planning Regulations, 1964.
- The land use plan is prepared in accordance with the provisions of the Town and Country Planning Act, 1963 and the Kerala Town and Country Planning Regulations, 1964.
- The land use plan is prepared in accordance with the provisions of the Town and Country Planning Act, 1963 and the Kerala Town and Country Planning Regulations, 1964.
- The land use plan is prepared in accordance with the provisions of the Town and Country Planning Act, 1963 and the Kerala Town and Country Planning Regulations, 1964.
- The land use plan is prepared in accordance with the provisions of the Town and Country Planning Act, 1963 and the Kerala Town and Country Planning Regulations, 1964.
- The land use plan is prepared in accordance with the provisions of the Town and Country Planning Act, 1963 and the Kerala Town and Country Planning Regulations, 1964.
- The land use plan is prepared in accordance with the provisions of the Town and Country Planning Act, 1963 and the Kerala Town and Country Planning Regulations, 1964.
- The land use plan is prepared in accordance with the provisions of the Town and Country Planning Act, 1963 and the Kerala Town and Country Planning Regulations, 1964.
- The land use plan is prepared in accordance with the provisions of the Town and Country Planning Act, 1963 and the Kerala Town and Country Planning Regulations, 1964.



Handwritten notes and signatures:

- Water Canal*
- S.S. Road*
- Khanat*
- Janu*
- Rajendran*
- H. Anand*
- S.P. Prasad*
- S. Prasad*
- Handwritten signatures and initials.*

CARMONA PANCHAYAT
SALCETE TALUKA
 REGIONAL PLAN NO. 2002
 TOWN AND COUNTRY PLANNING DEPT.
 TRIPUNITHURUR
 DATE: 10/10/2017
 SCALE: 1:5000
 MAP FILE NO: 10/10/2017