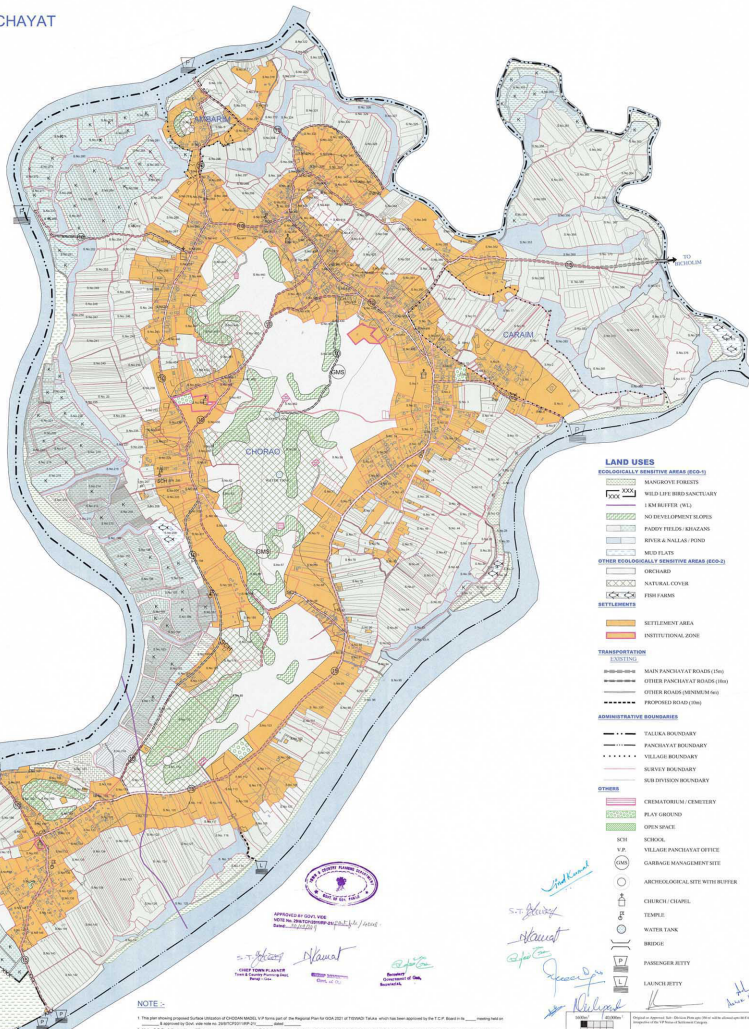




**CHODAN MADEL PANCHAYAT**  
(CHORAO, AMBARIM, CARAIM )  
TISWADI TALUKA  
SCALE 1 : 7,000

BARDEZ  
TALUKA



- LAND USES**
- ECOLOGICAL SENSITIVE AREA (ECSA)**
- MANEJIVE FORESTS
  - WILDLIFE BIRD SANCTUARY
  - LEAF LITTER (GL)
  - NO DEVELOPMENT ZONES
  - FACTORY TILES, ASPHALT
  - WATER FALLOUT POND
  - MUD FLATS
- OTHER ECOLOGICAL SENSITIVE AREA (ECSA)**
- CRASHLAND
  - NATURAL COVER
  - FISH FARMS
- SETTLEMENTS**
- SETTLEMENT AREA
  - INDUSTRIAL ZONE
- TRANSPORTATION**
- MAJORITY PANCHAYAT BOUNDARY (M)
  - OTHER PANCHAYAT BOUNDARY (O)
  - OTHER ROAD (MINIMUM 6M)
  - PROPOSED ROAD (2M)
- BOUNDARIES**
- TALUKA BOUNDARY
  - PANCHAYAT BOUNDARY
  - VILLAGE BOUNDARY
  - SURVEY BOUNDARY
  - REVENUE BOUNDARY
- OTHERS**
- CEMETERY/CENITARY
  - PLAY GROUND
  - OPEN SPACE
  - SCH
  - SCHOOL
  - VILLAGE PANCHAYAT OFFICE
  - GARIBADI MANAGEMENT SITE
  - ARCHAEOLOGICAL SITE WITH BUFFER
  - CHURCH / CHAWL
  - TEMPLE
  - WATER TANK
  - BRIDGE
  - PANJERIE RTTY
  - LANCH RTTY



APPROVED BY GOVT. OF GOA  
MINISTER, DEPARTMENT OF URBAN PLANNING  
TISWADI TALUKA

*(Handwritten signatures and dates)*

**NOTE :-**

- This plan showing proposed land use/cover of CHODAN MADEL, V.P. being part of the Regional Plan for ECZ-2017 (TISWADI Taluka) which has been approved by the P.C.P. Board on ...
- It is to be noted that the plan is prepared in accordance with the provisions of the Regional Plan for ECZ-2017 (TISWADI Taluka) and the provisions of the P.C.P. Board on ...
- The plan is prepared in accordance with the provisions of the Regional Plan for ECZ-2017 (TISWADI Taluka) and the provisions of the P.C.P. Board on ...
- The plan is prepared in accordance with the provisions of the Regional Plan for ECZ-2017 (TISWADI Taluka) and the provisions of the P.C.P. Board on ...
- The plan is prepared in accordance with the provisions of the Regional Plan for ECZ-2017 (TISWADI Taluka) and the provisions of the P.C.P. Board on ...
- The plan is prepared in accordance with the provisions of the Regional Plan for ECZ-2017 (TISWADI Taluka) and the provisions of the P.C.P. Board on ...
- The plan is prepared in accordance with the provisions of the Regional Plan for ECZ-2017 (TISWADI Taluka) and the provisions of the P.C.P. Board on ...
- The plan is prepared in accordance with the provisions of the Regional Plan for ECZ-2017 (TISWADI Taluka) and the provisions of the P.C.P. Board on ...
- The plan is prepared in accordance with the provisions of the Regional Plan for ECZ-2017 (TISWADI Taluka) and the provisions of the P.C.P. Board on ...
- The plan is prepared in accordance with the provisions of the Regional Plan for ECZ-2017 (TISWADI Taluka) and the provisions of the P.C.P. Board on ...

**CHODAN MADEL PANCHAYAT**  
TISWADI TALUKA

DATE OF ISSUE: 01/09/2017  
BY: 100/100/2017  
REGIONAL PLAN DIVISION  
TISWADI TALUKA PANNING DEPT.  
GOVT. OF GOA

SCALE: 1:7000

DATE FOR APPROVAL: 01/09/2017

BY: S. S. S. S.