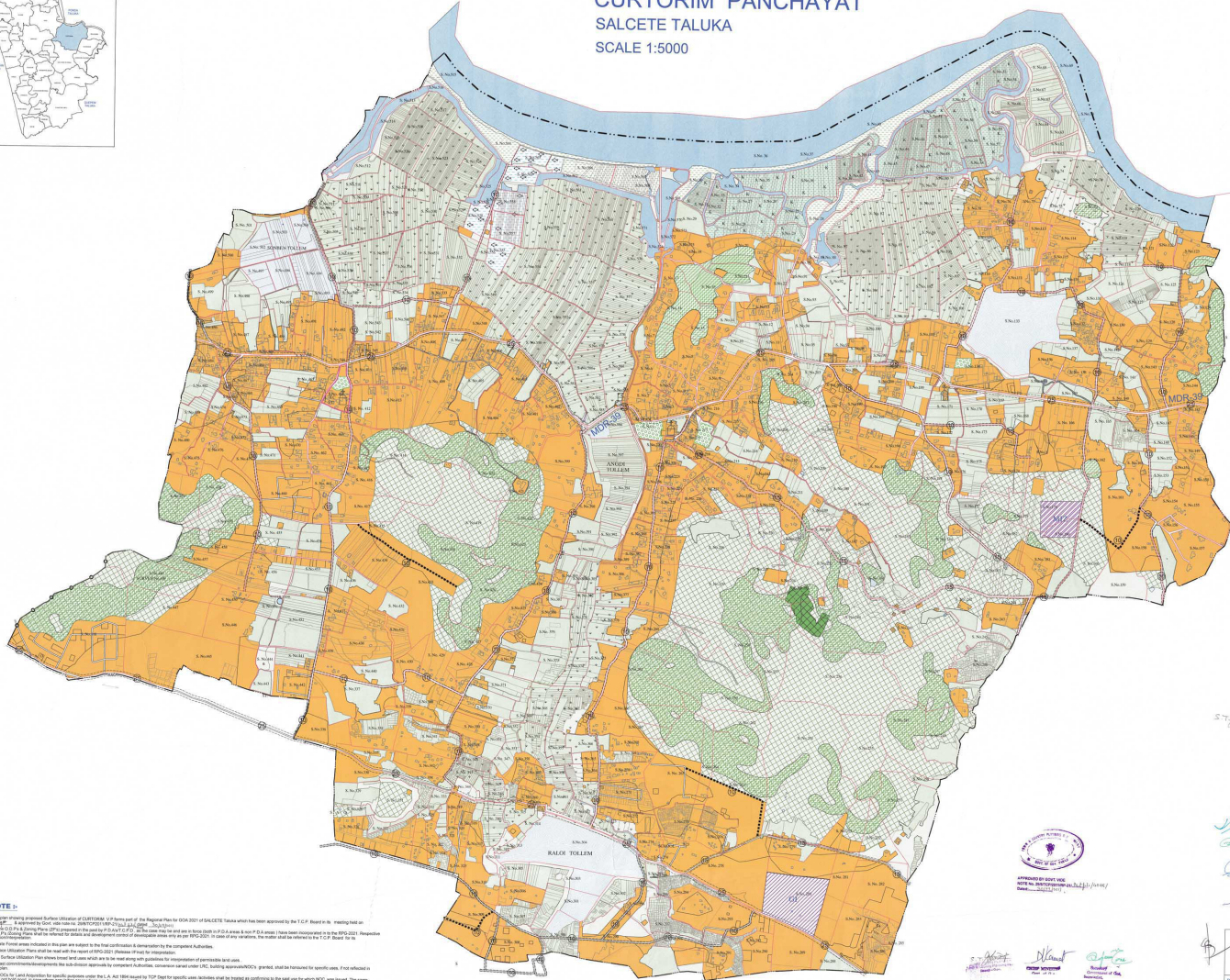




CURTORM PANCHAYAT

SALCETE TALUKA

SCALE 1:5000



- LAND USES**
- ECOLOGICALLY SENSITIVE AREA (ECS-1)**
- [Symbol] FERTILITY
 - [Symbol] MANGROVE FOREST
 - [Symbol] SO DEVELOPABLE FORESTS
 - [Symbol] RIVERS & CANALS & POND
 - [Symbol] PADDY FIELDS
- OTHER ECOLOGICALLY SENSITIVE AREA (ECS-2)**
- [Symbol] CULTIVABLE LAND
 - [Symbol] ORCHARD
 - [Symbol] NATURAL COVER
 - [Symbol] FISH FARMS
 - [Symbol] IRRIGATION COMMAND AREA
- INDUSTRIAL**
- [Symbol] GENERAL INDUSTRIAL
 - [Symbol] MICRO INDUSTRIAL ZONE
- SETTLEMENTS**
- [Symbol] SETTLEMENT AREA
- TRANSPORTATION**
- [Symbol] MAJOR DISTRICT ROADS (2nd)
 - [Symbol] MAIN PANCHAYAT ROADS (1st)
 - [Symbol] OTHER PANCHAYAT ROADS (1st)
 - [Symbol] OTHER ROADS (Minimum 6m)
 - [Symbol] PROPOSED ROADS
- ADMINISTRATIVE BOUNDARIES**
- [Symbol] TALUKA BOUNDARY
 - [Symbol] PANCHAYAT BOUNDARY
 - [Symbol] MUNICIPAL BOUNDARY
 - [Symbol] SURVEY BOUNDARY
 - [Symbol] SUB DIVISION
- OTHERS**
- [Symbol] PLAY GROUND
 - [Symbol] TEMPLE
 - [Symbol] CHURCH/CHAPEL



S. J. Shree

Shree

Shree

Shree

Shree

Shree

Shree

Shree

NOTE:

- The present plan is prepared for the utilization of CURTORM PANCHAYAT area as per the Regional Plan for SALCETE Taluka which has been approved by the T.C.P. Board in its meeting held on 14.08.2011. It is a preliminary plan and subject to the final approval of the Government of Karnataka.
- The plan is prepared for the utilization of CURTORM PANCHAYAT area as per the Regional Plan for SALCETE Taluka which has been approved by the T.C.P. Board in its meeting held on 14.08.2011. It is a preliminary plan and subject to the final approval of the Government of Karnataka.
- The plan is prepared for the utilization of CURTORM PANCHAYAT area as per the Regional Plan for SALCETE Taluka which has been approved by the T.C.P. Board in its meeting held on 14.08.2011. It is a preliminary plan and subject to the final approval of the Government of Karnataka.
- The plan is prepared for the utilization of CURTORM PANCHAYAT area as per the Regional Plan for SALCETE Taluka which has been approved by the T.C.P. Board in its meeting held on 14.08.2011. It is a preliminary plan and subject to the final approval of the Government of Karnataka.
- The plan is prepared for the utilization of CURTORM PANCHAYAT area as per the Regional Plan for SALCETE Taluka which has been approved by the T.C.P. Board in its meeting held on 14.08.2011. It is a preliminary plan and subject to the final approval of the Government of Karnataka.

APPROVED DATE: 14/08/2011

PREPARED BY: [Signature]

DATE: 14/08/2011

SCALE: 1:5000

REGIONAL PLAN DIVISION
TOWN AND COUNTRY PLANNING DEPT.
GOVT. OF KARNATAKA