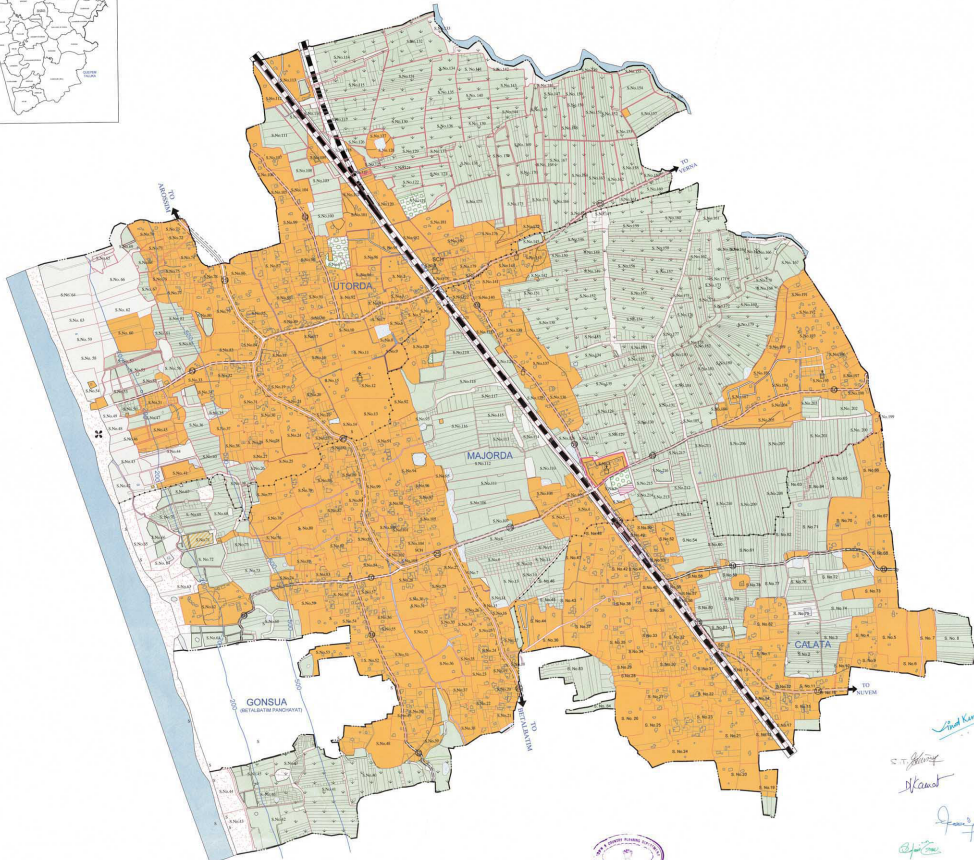




MAJORDA-UTORDA-CALATA PANCHAYAT
 (MAJORDA, UTORDA, CALATA)
 SALCETE TALUKA
 SCALE 1 : 5,000



LAND USES

ECOLOGICALLY SENSITIVE AREAS (E.S.A.)

- WETLANDS
- WATER BODIES
- WATER & SALINITY ZONE
- WATER DIVISION
- WATER DIVISION

OTHER ECOLOGICALLY SENSITIVE AREAS (E.S.A.)

- WETLANDS
- WATER BODIES
- WATER & SALINITY ZONE
- WATER DIVISION
- WATER DIVISION

SETBACKS

- SETBACKS
- SETBACKS
- SETBACKS
- SETBACKS

TRANSPORTATION (EXISTING)

- MAJOR DISTRICT ROAD (24)
- MAJOR PANCHAYAT ROAD (16)
- OTHER PANCHAYAT ROAD (16)
- OTHER ROAD (ARBITRARY)
- RAILWAY

ADMINISTRATIVE BOUNDARIES

- PANCHAYAT BOUNDARY
- VILLAGE BOUNDARY
- SURVEY BOUNDARY
- WATER DIVISION BOUNDARY

OTHERS

- TRANSMISSION CONDUIT
- PLAY GROUND
- WATER LINE FOOTPATH
- WATER LINE FOOTPATH
- CHURCH/CHAPEL
- SCHOOL
- TOURIST BEACH ROAD

NOTE:-

- The plan was prepared under the provisions of the Maharashtra Municipal Corporation Act, 1947 and the Maharashtra Municipal Corporation (Amendment) Act, 1956, and the Maharashtra Municipal Corporation (Amendment) Act, 1962, and the Maharashtra Municipal Corporation (Amendment) Act, 1967, and the Maharashtra Municipal Corporation (Amendment) Act, 1972, and the Maharashtra Municipal Corporation (Amendment) Act, 1977, and the Maharashtra Municipal Corporation (Amendment) Act, 1982, and the Maharashtra Municipal Corporation (Amendment) Act, 1987, and the Maharashtra Municipal Corporation (Amendment) Act, 1992, and the Maharashtra Municipal Corporation (Amendment) Act, 1997, and the Maharashtra Municipal Corporation (Amendment) Act, 2002, and the Maharashtra Municipal Corporation (Amendment) Act, 2007, and the Maharashtra Municipal Corporation (Amendment) Act, 2012, and the Maharashtra Municipal Corporation (Amendment) Act, 2017, and the Maharashtra Municipal Corporation (Amendment) Act, 2022.
- The plan was prepared under the provisions of the Maharashtra Municipal Corporation Act, 1947 and the Maharashtra Municipal Corporation (Amendment) Act, 1956, and the Maharashtra Municipal Corporation (Amendment) Act, 1962, and the Maharashtra Municipal Corporation (Amendment) Act, 1967, and the Maharashtra Municipal Corporation (Amendment) Act, 1972, and the Maharashtra Municipal Corporation (Amendment) Act, 1977, and the Maharashtra Municipal Corporation (Amendment) Act, 1982, and the Maharashtra Municipal Corporation (Amendment) Act, 1987, and the Maharashtra Municipal Corporation (Amendment) Act, 1992, and the Maharashtra Municipal Corporation (Amendment) Act, 1997, and the Maharashtra Municipal Corporation (Amendment) Act, 2002, and the Maharashtra Municipal Corporation (Amendment) Act, 2007, and the Maharashtra Municipal Corporation (Amendment) Act, 2012, and the Maharashtra Municipal Corporation (Amendment) Act, 2017, and the Maharashtra Municipal Corporation (Amendment) Act, 2022.
- The plan was prepared under the provisions of the Maharashtra Municipal Corporation Act, 1947 and the Maharashtra Municipal Corporation (Amendment) Act, 1956, and the Maharashtra Municipal Corporation (Amendment) Act, 1962, and the Maharashtra Municipal Corporation (Amendment) Act, 1967, and the Maharashtra Municipal Corporation (Amendment) Act, 1972, and the Maharashtra Municipal Corporation (Amendment) Act, 1977, and the Maharashtra Municipal Corporation (Amendment) Act, 1982, and the Maharashtra Municipal Corporation (Amendment) Act, 1987, and the Maharashtra Municipal Corporation (Amendment) Act, 1992, and the Maharashtra Municipal Corporation (Amendment) Act, 1997, and the Maharashtra Municipal Corporation (Amendment) Act, 2002, and the Maharashtra Municipal Corporation (Amendment) Act, 2007, and the Maharashtra Municipal Corporation (Amendment) Act, 2012, and the Maharashtra Municipal Corporation (Amendment) Act, 2017, and the Maharashtra Municipal Corporation (Amendment) Act, 2022.
- The plan was prepared under the provisions of the Maharashtra Municipal Corporation Act, 1947 and the Maharashtra Municipal Corporation (Amendment) Act, 1956, and the Maharashtra Municipal Corporation (Amendment) Act, 1962, and the Maharashtra Municipal Corporation (Amendment) Act, 1967, and the Maharashtra Municipal Corporation (Amendment) Act, 1972, and the Maharashtra Municipal Corporation (Amendment) Act, 1977, and the Maharashtra Municipal Corporation (Amendment) Act, 1982, and the Maharashtra Municipal Corporation (Amendment) Act, 1987, and the Maharashtra Municipal Corporation (Amendment) Act, 1992, and the Maharashtra Municipal Corporation (Amendment) Act, 1997, and the Maharashtra Municipal Corporation (Amendment) Act, 2002, and the Maharashtra Municipal Corporation (Amendment) Act, 2007, and the Maharashtra Municipal Corporation (Amendment) Act, 2012, and the Maharashtra Municipal Corporation (Amendment) Act, 2017, and the Maharashtra Municipal Corporation (Amendment) Act, 2022.

MAJORDA-UTORDA-CALATA PANCHAYAT
 SALCETE TALUKA
 DISTRICT PLAN DIVISION
 TOWN AND COUNTRY PLANNING DEPT.

POPULATION: 10000
 AREA: 1000
 DATE: 2022

MAJ. PLAN DIVISION
 OFF. & BLDG. NO.

Scale: 1:5000

North arrow pointing up.