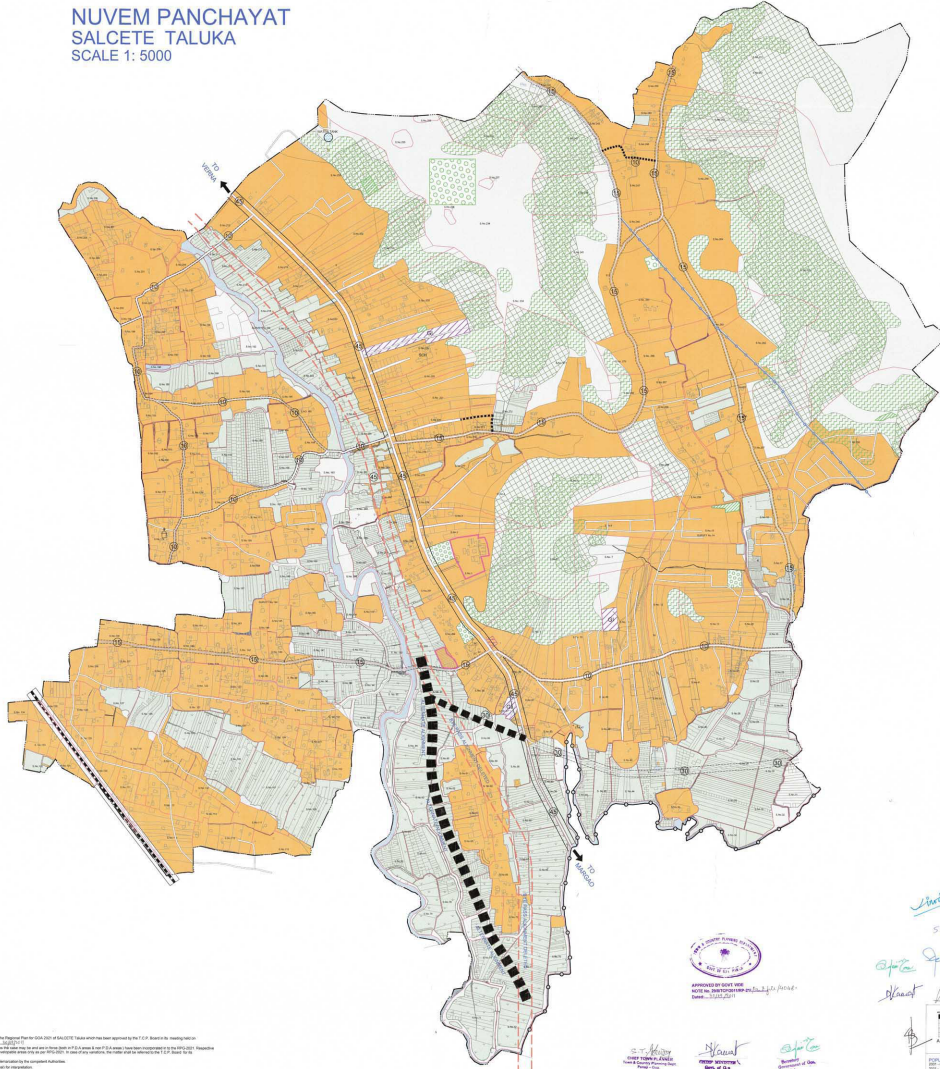


NUVEM PANCHAYAT
SALCETE TALUKA
SCALE 1: 5000



- LAND USES**
- ECOLOGICALLY SENSITIVE AREAS (ECO-1)**
 - NO DEVELOPMENT SLOPES
 - RIVERS & HILLS/ POND
 - PAVED FIELDS
 - OTHER ECOLOGICALLY SENSITIVE AREAS (ECO-2)**
 - CULTIVABLE LAND
 - ORCHARDS
 - NATURAL COVER
 - IRRIGATION COMMAND AREAS
 - INDUSTRIAL**
 - GENERAL INDUSTRY
 - SETTLEMENTS**
 - SETTLEMENT AREAS 2001
 - TRANSPORTATION**
 - NATIONAL HIGHWAY PWD ALIGNMENT
 - STATE HIGHWAY
 - STATE HIGHWAY (20m)
 - MAJOR DISTRICT ROADS (25m)
 - MAIN PANCHAYAT ROADS (15m)
 - OTHER PANCHAYAT ROADS (10m)
 - OTHER ROADS (Minimum 6m)
 - PROPOSED ROAD
 - PROPOSED ROAD (20m)
 - PROPOSED ROADS (10m)
 - RAILWAY
 - ADMINISTRATIVE BOUNDARIES**
 - MUNICIPAL BOUNDARY
 - PANCHAYAT BOUNDARY
 - SURVEY BOUNDARY
 - SUB DIVISION
 - OTHERS**
 - CREMATORIUM/ CEMETERY
 - PLAY GROUND
 - OPEN SPACE
 - CHURCH/ CHAPEL
 - SCHOOL
 - WATER TANK
 - WATER SUPPLY PIPE LINE

Handwritten notes:
 - *Water Demand*
 - *S.T. Along*
 - *Water Tank*
 - *Water Supply*
 - *Water Pipe*
 - *Water Tank*
 - *Water Pipe*



Handwritten signatures and stamps:
 - *Dr. M. S. ...*
 - *Dr. ...*
 - *Dr. ...*

NOTE:
 1. This plan was prepared under the supervision of the Regional Planning Commission, Salcete Taluka, and was approved by the P. U. Board in the meeting on 15/01/2011. The plan was prepared under the supervision of the Regional Planning Commission, Salcete Taluka, and was approved by the P. U. Board in the meeting on 15/01/2011.
 2. This plan was prepared under the supervision of the Regional Planning Commission, Salcete Taluka, and was approved by the P. U. Board in the meeting on 15/01/2011.
 3. This plan was prepared under the supervision of the Regional Planning Commission, Salcete Taluka, and was approved by the P. U. Board in the meeting on 15/01/2011.
 4. This plan was prepared under the supervision of the Regional Planning Commission, Salcete Taluka, and was approved by the P. U. Board in the meeting on 15/01/2011.
 5. This plan was prepared under the supervision of the Regional Planning Commission, Salcete Taluka, and was approved by the P. U. Board in the meeting on 15/01/2011.
 6. This plan was prepared under the supervision of the Regional Planning Commission, Salcete Taluka, and was approved by the P. U. Board in the meeting on 15/01/2011.
 7. This plan was prepared under the supervision of the Regional Planning Commission, Salcete Taluka, and was approved by the P. U. Board in the meeting on 15/01/2011.
 8. This plan was prepared under the supervision of the Regional Planning Commission, Salcete Taluka, and was approved by the P. U. Board in the meeting on 15/01/2011.
 9. This plan was prepared under the supervision of the Regional Planning Commission, Salcete Taluka, and was approved by the P. U. Board in the meeting on 15/01/2011.
 10. This plan was prepared under the supervision of the Regional Planning Commission, Salcete Taluka, and was approved by the P. U. Board in the meeting on 15/01/2011.

**NUVEM PANCHAYAT
SALCETE TALUKA
REGIONAL PLAN REGISTERED 2011
FOR ZONING (RPS-21) SCALE 1:5000**

TOUR AND COUNTRY PLANNING DEPT.
MUMBAI, INDIA