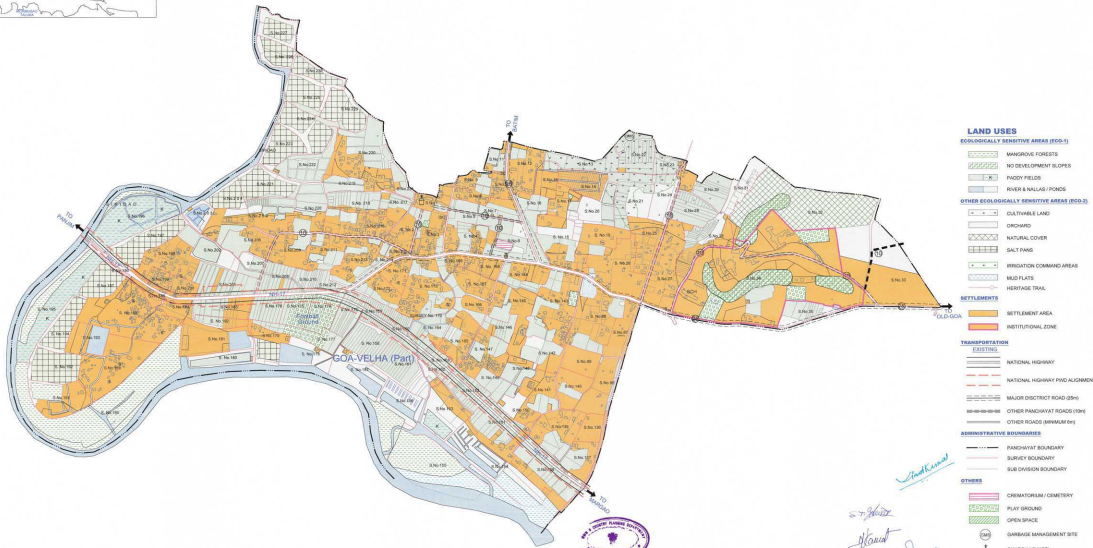




ST. ANDRE PANCHAYAT
GOA-VELHA (Part)
TISWADI TALUKA
SCALE 1: 5,000



- LAND USES**
- ECOLOGICALLY SENSITIVE AREAS (E.S.A.)**
- MANGROVE FORESTS
 - NO DEVELOPMENT BUFFER
 - PAVED FIELDS
 - RIVER & SLAGS PONDS
- OTHER ECOLOGICALLY SENSITIVE AREAS (E.O.S.A.)**
- CULTIVABLE LAND
 - ORCHARD
 - NATURAL COVER
 - SALT PANS
 - IRRIGATION COMMAND AREA
 - WETLANDS
 - HERITAGE TRAIL
- SETTLEMENTS**
- SETTLEMENT AREA
 - INSTITUTIONAL ZONE
- TRANSPORTATION**
- ESTABLISHED
 - NATIONAL HIGHWAY
 - NATIONAL HIGHWAY PAVED ALIGNMENT
 - MAJOR DISTRICT ROAD (DR)
 - OTHER PANCHAYAT ROAD (OPR)
 - OTHER ROAD (BR/MS/PR)
- ADMINISTRATIVE BOUNDARIES**
- PANCHAYAT BOUNDARY
 - SURVEY BOUNDARY
 - SUB-DIVISION BOUNDARY
- OTHERS**
- CREMATORIUM/CEMETERY
 - PLAY GROUND
 - OPEN SPACE
 - WASTE MANAGEMENT SITE
 - CHURCH/CHAPEL
 - SCH. SCHOOL

APPROVED BY THE
LOCAL GOVT. TISWADI TALUKA
DATE: 10/08/2011
OFFICE: TISWADI



ST. ANDRE PANCHAYAT
GOA-VELHA (Part)



Handwritten notes and signatures:
Vandana
Hant
Rajesh
Jagan
Hant
Hant

NOTE:

- This plan showing proposed Surface Utilization of ST. ANDRE (Part) is a part of the Regional Plan for GOA 2011 of TISWADI Taluka, which has been approved by the T.C.P. Board in 2011. Existing Urban Utilization is represented by the same color as in 2011. (Refer to the map).
- All the ST. ANDRE (Part) is proposed in the year 2011. It is a part of the T.C.P. Board in 2011. In the year 2011, the plan was approved by the T.C.P. Board. It is a part of the T.C.P. Board in 2011. It is a part of the T.C.P. Board in 2011. It is a part of the T.C.P. Board in 2011.
- Private land areas included in this plan are subject to the final confirmation of beneficiaries to be completed afterwards.
- For the details of the plan and its impact on the environment, please refer to the Environmental Impact Assessment Report.
- This Surface Utilization Plan is intended to be used as a guide for the implementation of permissible land uses.
- All the land use changes proposed in this plan are subject to the approval of the T.C.P. Board in 2011. It is a part of the T.C.P. Board in 2011. It is a part of the T.C.P. Board in 2011. It is a part of the T.C.P. Board in 2011.
- All the land use changes proposed in this plan are subject to the approval of the T.C.P. Board in 2011. It is a part of the T.C.P. Board in 2011. It is a part of the T.C.P. Board in 2011. It is a part of the T.C.P. Board in 2011.
- All the land use changes proposed in this plan are subject to the approval of the T.C.P. Board in 2011. It is a part of the T.C.P. Board in 2011. It is a part of the T.C.P. Board in 2011. It is a part of the T.C.P. Board in 2011.

	ST. ANDRE PANCHAYAT TISWADI TALUKA		
	POPULATION: 2011: 1000 2011: 1000 2011: 1000	REGIONAL PLAN FOR GOA 2011 REGIONAL PLAN DIVISION TOWN AND COUNTRY PLANNING DEPT. GOVT. OF GOA	